

**objektiv** GmbH & Co. KG

Büro- & Objektausstattung

Bunsenstraße 20

71032 Böblingen

Tel.: 07031/74 24 16-0

Fax.: 07031/74 24 16-1

URL: [www.objektiv-gmbh.de](http://www.objektiv-gmbh.de)

E-Mail: [post@objektiv-gmbh.de](mailto:post@objektiv-gmbh.de)



# MATERIALS

**CZ**

Barevná přesnost může být zaručena pouze dle originálních vzorků látek a dekorů. Barevné vzory látek a dekorů použité v tomto vzorníku jsou tištěné reprodukce, které se mohou lišit od originálních barev a nejsou proto důvodem k reklamaci.

**EN**

Colour accuracy can be guaranteed according to original samples only. Differences in colour compared to the original fabrics are unavoidable in printed catalogues and do not constitute grounds for complaint.

**DE**

Farbverbindlichkeit kann nur bei Originalmustern gewährleistet werden. Farbabweichungen zum originalen Bezugsstoff sind drucktechnisch bedingt und bieten keinen Anlass zu Reklamationen.

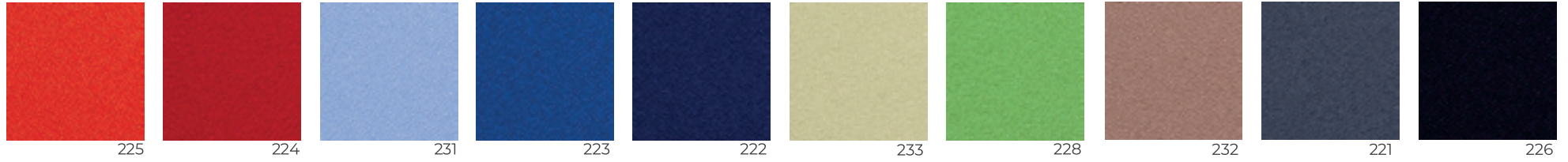
**FR**

La précision des couleurs ne peut être garantie qu'en fonction du motif original des tissus et des décorations. Les motifs de couleur des tissus et des décors utilisés dans ce nuancier sont des reproductions imprimées qui peuvent différer des couleurs d'origine et ne constituent donc pas un motif de réclamation.

**Rim**<sup>®</sup>

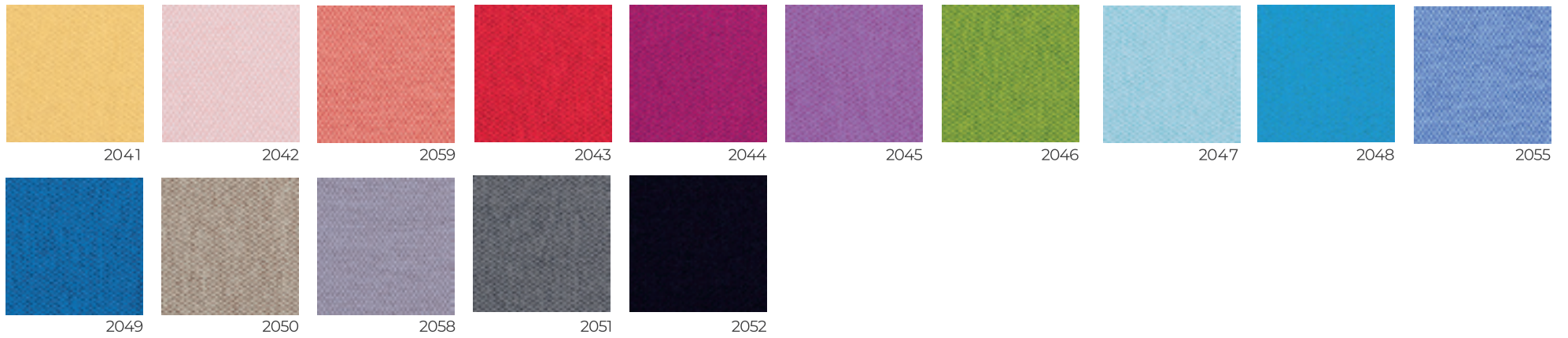
# P / BONDAI

100% polyester / Abrasion resistance 150.000 Martindale /  
Flammability EN 1021-1, EN 1021-2, Crib 5 (BS 5852 part II  
BS 7176:1995 Medium Hazard



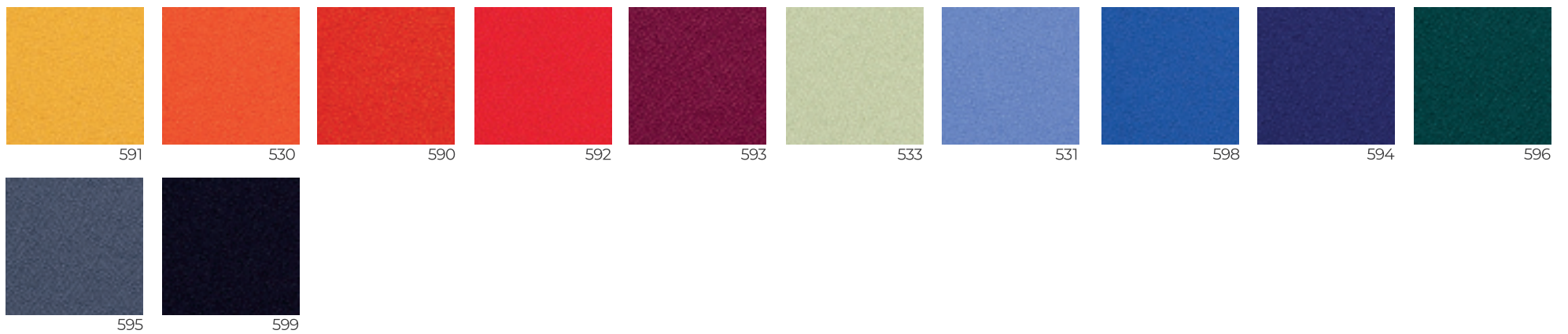
# A / ERA

100% polyester / Abrasion resistance 100.000 Martindale /  
Flammability BS EN 1021 - 1:2014, BS EN 1021 - 2:2014  
BS 7176:2007 Low Hazard



# A / PHOENIX

100% polyester / Abrasion resistance 100.000 Martindale /  
Flammability BS EN 1021 - 1 - 2:2014, BS 7176 : 2007 Low Hazard

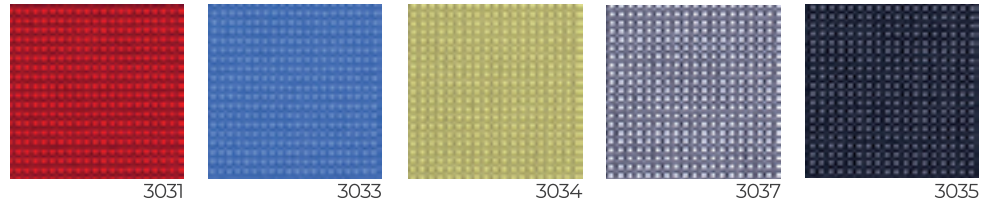






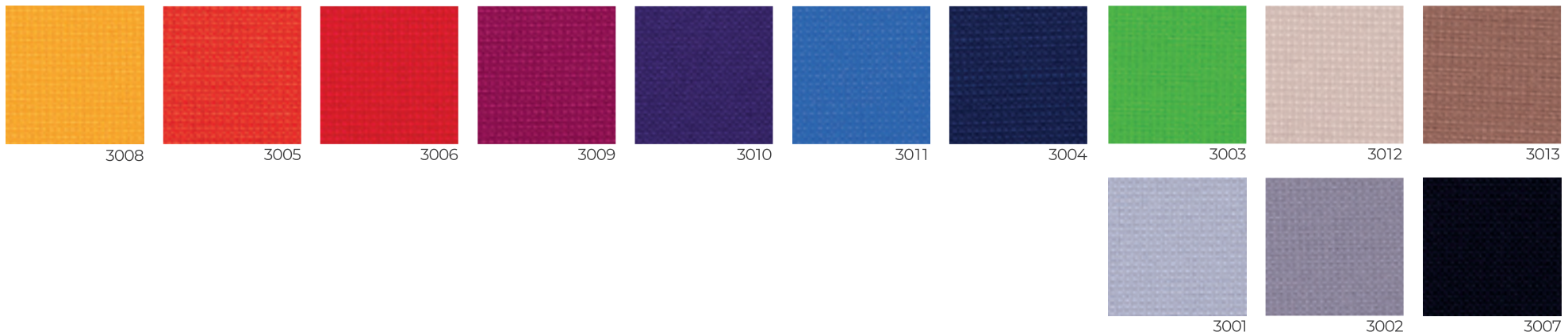
100% polyester Trevira CS / Abrasion resistance  
 100.000 Martindale / Flammability EN 1021/1 - 2,  
 CRIB 5 (BS 5852 PART II), BS 7176:1995 Medium Hazard

## RELAX BICO / B



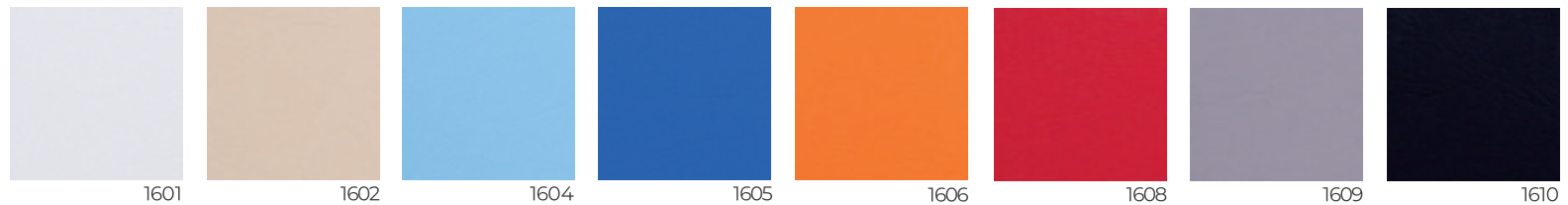
100% recycled polyester / Abrasion resistance 100.000  
 Martindale / Flammability BS EN 1021 - 1:2014, BS EN 1021 - 2:2014,  
 BS 7176 : 2007 Low Hazard BS 7176 : 2007 Medium Hazard,  
 BS 5852:2006 Section 4 Ignition Source 5

## URBAN / B



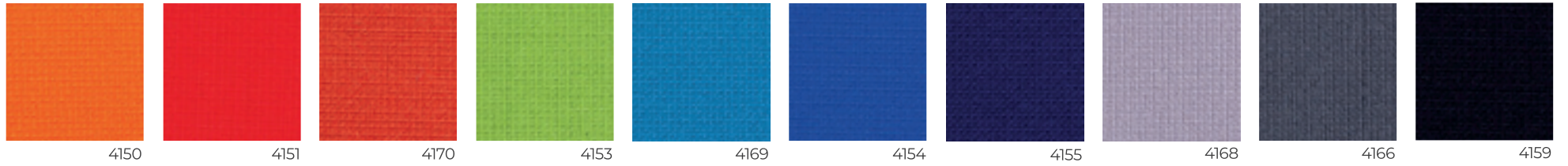
PVC – coating 89 % polyester / viscose 11 % / Thickness 1,1 mm ± 0,1  
 / Abrasion Resistance 100.000 Martindale / Flammability EN 1021 - 1+2, FMVSS 302  
 / UV-resistance acc. DIN EN ISO 105 B02, saltwater-resistance acc. DIN EN ISO 105 E02  
 / resistance to chlorinated water

## vinyl / PISA / B



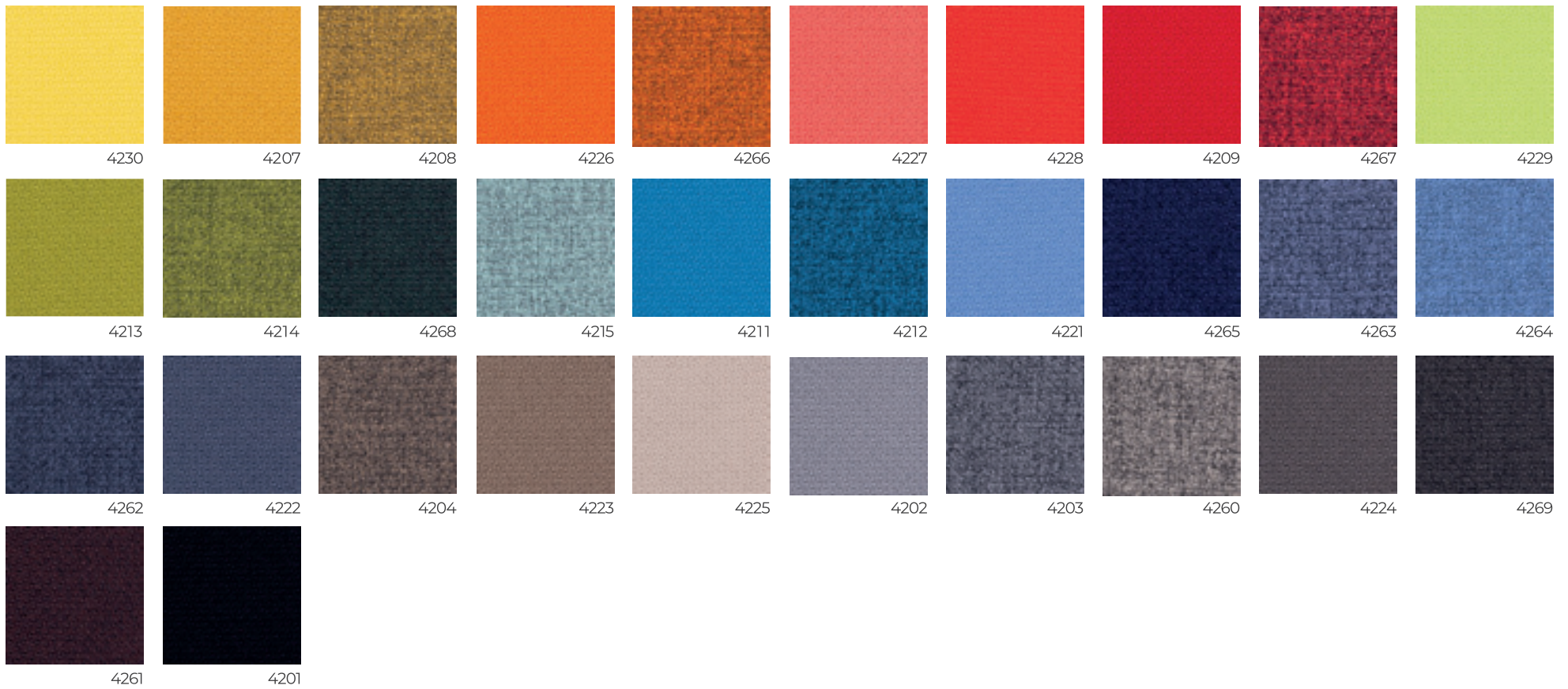
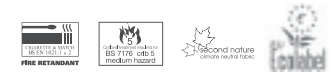
# C / FAME

95 % Wool, 5 % Polyamide / Abrasion resistance 200.00 Martindale /  
Flammability BS EN 1021 1&2, BS 5852 Crib 5, BS 7176 Medium Hazard



# C / STEP / STEP MELANGE

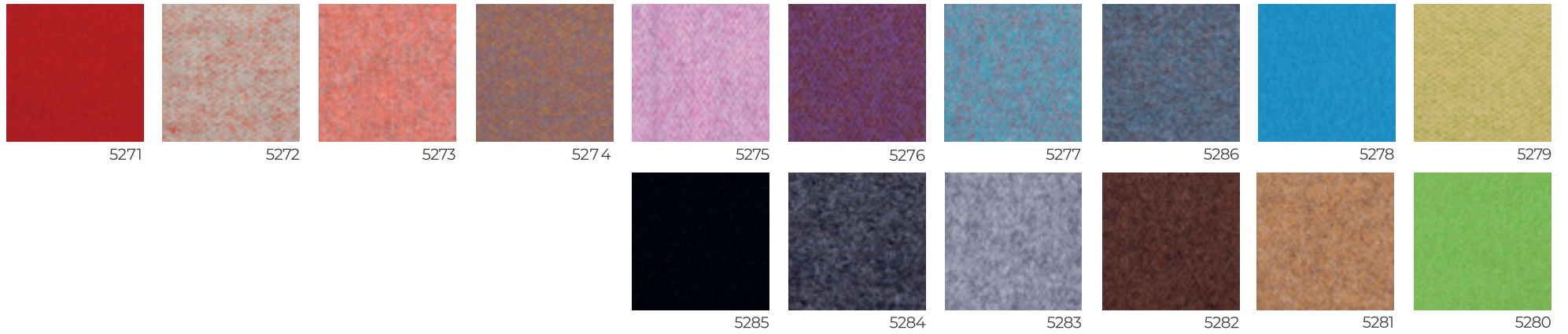
100 % Trevira CS / Abrasion resistance 100.000 Martindale /  
Flammability EN 1021 - 1&2, BS 5852 CRIB 5,  
BS 5851 PART 1&2, BS 7176 Medium Hazard





95% Virgin Wool, 5% Polyamide / Abrasion resistance 100.000  
 Martindale / Flammability EN 1021 - 1, EN 1021 - 2,  
 BS 7176 low hazard, UNI 9175 class 1 im, NF D 60-013, ÖNORM B 3825 & 3800-1

# SYNERGY/D



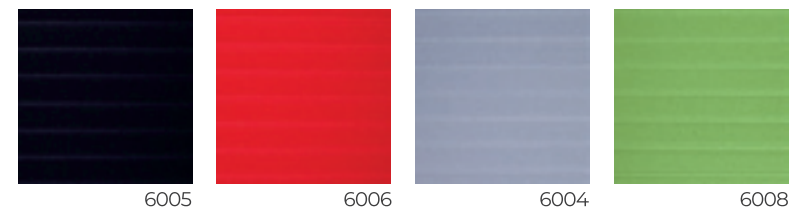
50% Polyamide, 33% wool, 17% viscose / Abrasion resistance 400.000  
 Martindale / Flammability BS EN 1021 - 1:2014, BS EN 1021 - 2:2014,  
 BS 7176 : 2007 Low Hazard, BS 7176 : 2007 Medium Hazard, BS 5852:2006, UNI 9175 CLASS 1 IM

# 24/7+/D



64% Polyester, 36% Polyurethane / Abrasion resistance 150.000 Martindale /  
 Flammability EN 1021 - 1&2

# EASY PRO LINE

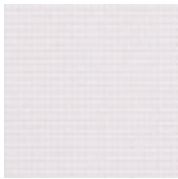




# MESH



K+R 482



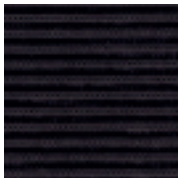
K+R 424



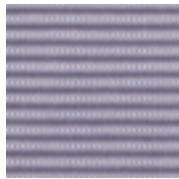
K+R 425



K+R 410



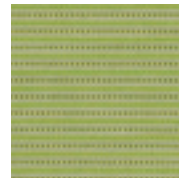
RIB 431



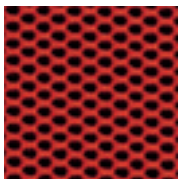
RIB 432



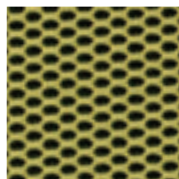
RIB 433



RIB 434



OMEGA 471



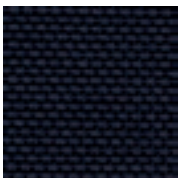
OMEGA 472



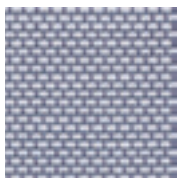
OMEGA 473



OMEGA 474



441



444

## K+R 482

/ 99 % Polyester, 1 % Elasthan  
/ Flammability: DIN EN 1021:2006 part 1

## K+R 424, 425, 410

/ 97 % Polyester, 2 % Polyamide, 1 % Elasthan  
/ Abrasion resistance 30.000 Martindale  
/ Flammability: DIN EN 1021:2014-01 part 1

## RIB

/ 58 % Polyamid, 34 % Polyester, 8 % Polyacryl  
/ Abrasion resistance 150.000 Martindale  
/ Flammability: DIN EN 1021:2014-01 part 1

## OMEGA

/ 100 % Polyester / Abrasion resistance 100.000 Martindale  
/ Flammability BS EN 1021 1&2, BS 5852 Part 1 0, 1

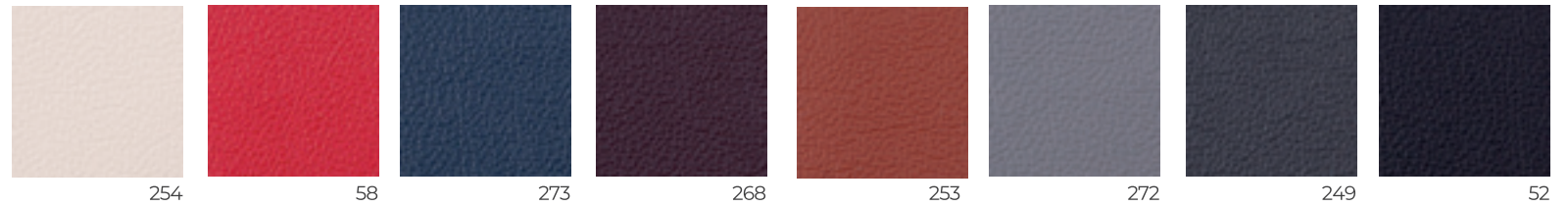
## SHRINX

/ 70 % Polyester, 30 % Polyamid  
/ Abrasion resistance 170.000 Martindale  
/ Flammability: D DIN EN 1021-1



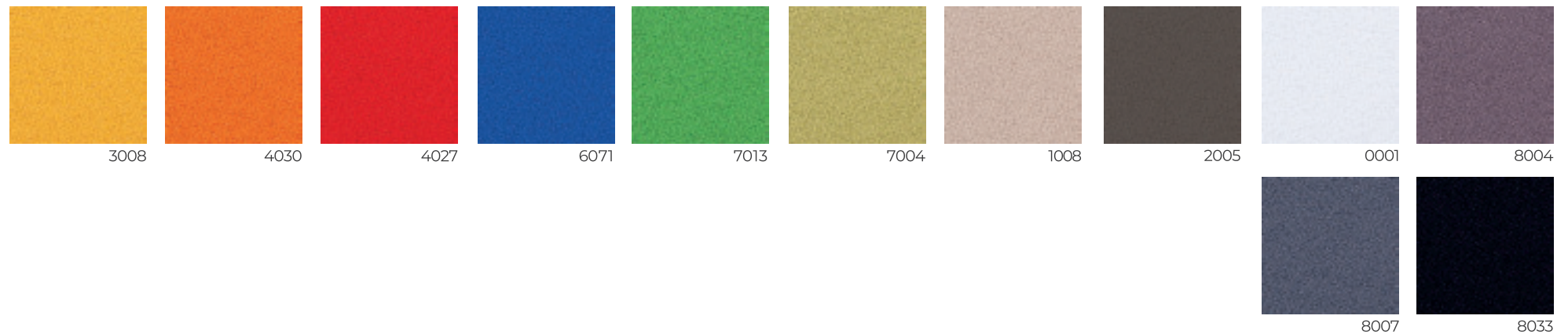
# leather / PRINCE / E

Leather Thickness 0,9-1 MM  
Leather Suitable for Upholstery



100% Polyester Trevira CS / Flammability EN 1021/1 - 2,  
BS 7176 Medium Hazard

# AKUSTIK



# TABLE TOP LAMINATE





office seating furniture



**Rim**<sup>®</sup>  
www.rim.cz